

Supershelf Shelving System

Starter Bay



Add On Bay



Description

The Supershelf shelving system is trusted by some of the world's biggest companies with the zinc-finish steel shelves installed in stockrooms, warehouses and archives worldwide. The solid construction of Supershelf makes the unit strong and durable whilst the modular design of the system creates near-endless flexibility making it a truly versatile storage solution.

Installation & Loading

Supershelf has bolt free assembly, can be installed free standing or bolted to the ground and walls. Each bay has a maximum loading of 1500kg whilst the Uniform Distributed Load (UDL) per shelf depends on the width:

- 900mm wide | UDL: 150kg per shelf
- 1200mm wide | UDL: 150kg per shelf
- 1500mm wide | UDL: 260kg per shelf
- 1800mm wide | UDL: 150kg per shelf

The heavy-duty models have a UDL of 500kg per shelf and a max bay loading of 2000kg.

Dimensions

Supershelf shelving can reach heights up to 3.5m and adjusted to suit the requirements of the room. However, they are available in the following standard sizes:

Heights: 2000mm | 2500mm

Widths (left to right): 900mm | 1200mm | 1500mm | 1800mm

Depths (front to back: 320mm | 400mm | 500mm | 600mm | 800mm

Shelf Levels: 4-8 (dependent on frame size)

Bay Types

Supershelf consists of two types: Starter Bays and Add-On Bays

Every shelving solution begins with the starter bays. They comprise of 2 vertical frames then either the beams and panels for shelving or the hanging rails.

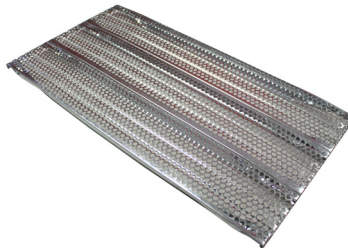
The width of the shelving can then be extended with add-on bays. They include only one frame as it uses one side of the starter bay to form a full shelf. Multiple add-on bays can be used and don't need to be the same width as the starter bay to give a versatile shelving solution.

Supershelf Shelving System



Solid Panel Shelves

The standard version of shelving. Panels have strengthening ribs to make them strong and slot into place on the shelf beams.



Perforated Panel Shelves

Similar to the solid panels however they have perforated holes over 50% of the surface area to water from fire sprinklers to quickly pass down the shelf levels.



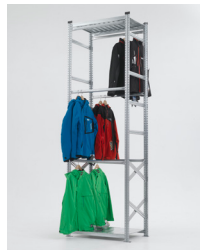
Single Sided Hanging Rail

Hanging rails on one side only for use against walls. This allows picking and placing from one side of the rack with hanging rails placed one side of each level.



Central Hanging Rail

The hanging rails are centrally located so that garments are entirely contained within the bay. This is ideal in smaller stockrooms or for use with mobile systems.



Double Sided Hanging Rail

Hanging rails on both sides for access from two aisles, which is the most popular and economical garment storage solution.



Bin/Small Item Shelving

Bin Shelving is ideal for storing and organising small goods or components in stockroom, manufacturing or assembly environments.

Warranty

Our Supershelf systems are built to last – but to give you complete peace of mind, they're also subject to a two-year warranty. The warranty covers the workmanship of the shelving, alongside any damage that was not caused by exceeding the weight limit on the shelves or as a result of any other improper use. To make sure your Supershelf system remains fully functional, we strongly advise having it inspected every six months to identify any signs of deterioration.