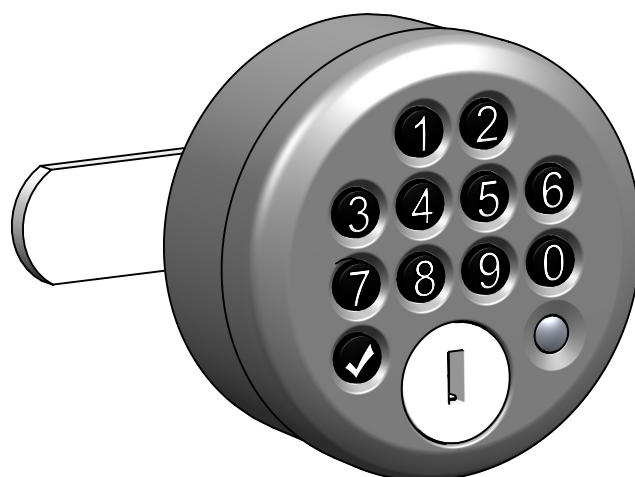


# Technical Information

## PIN-CODE-LOCK 1904



Product Description / Instructions for use .....	2
Standard mounting options .....	3
Recessed mounting options .....	4
Assembly / assembly sequence .....	5
Setting the direction of rotation .....	6
Battery change .....	7
Emergency opening by service key .....	8
Order matrix cam .....	9
Order matrix lock .....	10
Operating and programming instructions .....	11
Operating sticker .....	12



- 
- + Electronic PIN-CODE lock
  - + Can be retrofitted (standard fastening 16x19)
  - + Battery operated and network-independent (stand alone)
  - + Mechanical service cylinder for emergency opening
  - + Maintenance and environmentally friendly LOW ENERGY SYSTEM (approx. 100,000 locking cycles with a single standard battery)\*
  - + Battery: 1x 1,5V AA (Standard Alkaline)
  - + Quick battery change by service key from the front side with closed door, without additional tools, with retaining all settings.
  - + 6-digit freely selectable master code
  - + 4-digit freely selectable user code
  - + Various private and public modes
  - + Busy indicator in public mode
  - + AUTO-OPEN-TIMER available to avoid permanent reservations in public mode
  - + LED and buzzer signals
  - + Factory reset option
  - + Additional fastening options for wooden, HPL and glass doors
  - + Control panel can be removed by service key e.g. for changing batteries, programming or cabinet transporting.
  - + Direction of rotation R / L can be selected for left or right doors
  - + Extensive range of cams available
  - + Delivery condition ready for installation incl. cam, fixing material and battery

\* Depending on the operating mode, battery quality and without taking account of self-discharge that occurs over the years

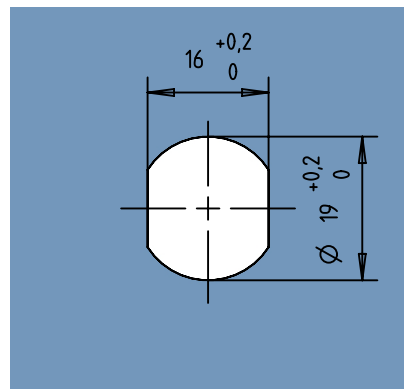
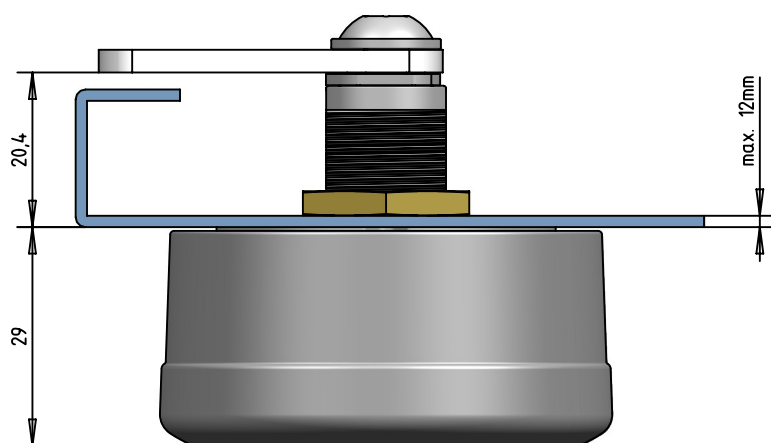
---

## Usage note

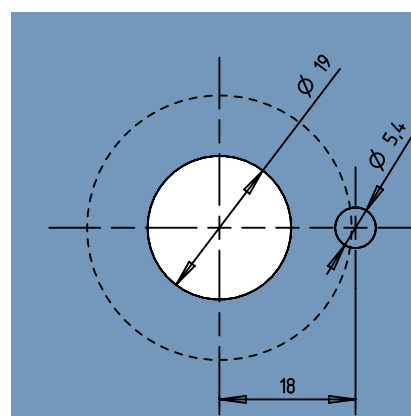
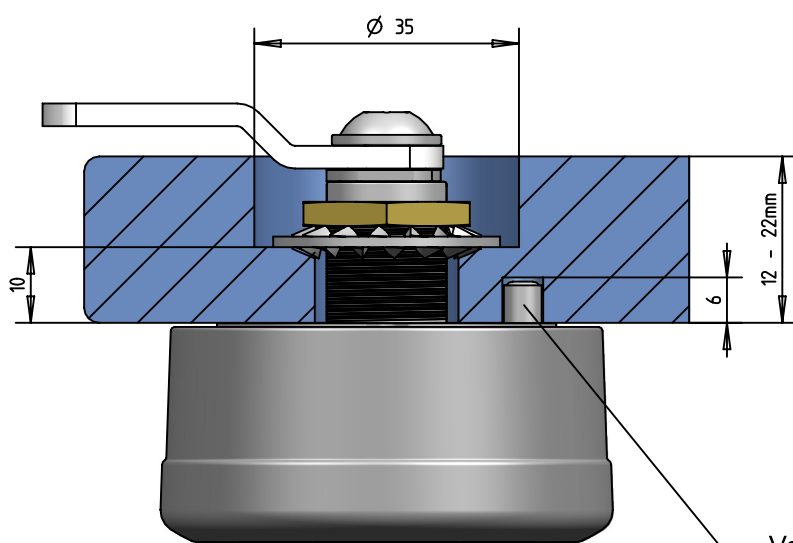
This product is intended for indoor use in a temperature range of 5-50C °.  
Protect it from environmental influences such as water, moisture, heat, frost and dirt.

## Standard mounting options

### 1. Fixing in steel doors with a 16x19 hole pattern

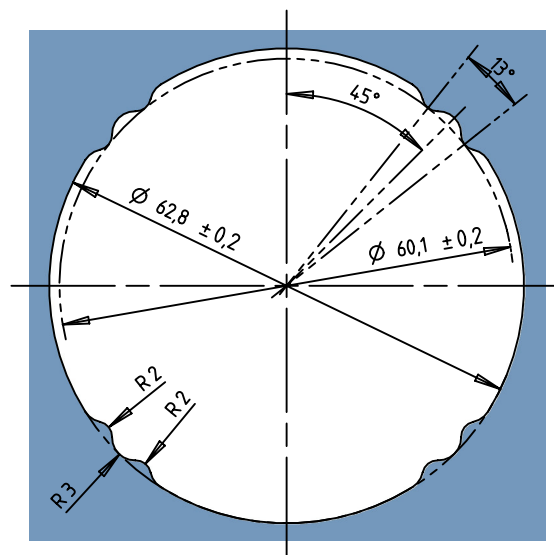
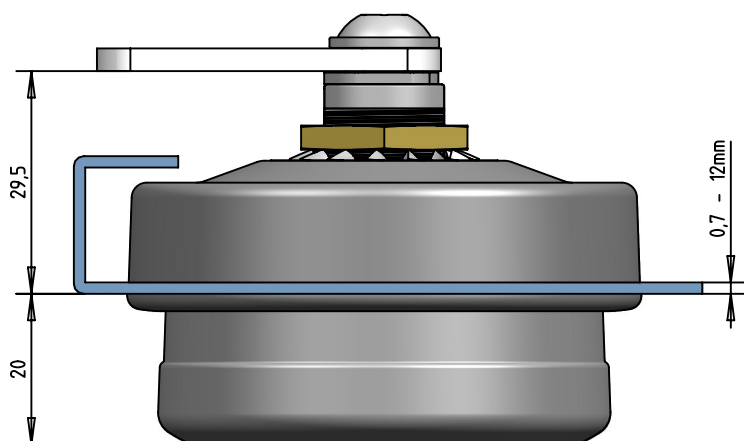


### 2. Fastening in wooden doors by means of cup drilling and optional anti-rotation bolt (Specify when ordering)

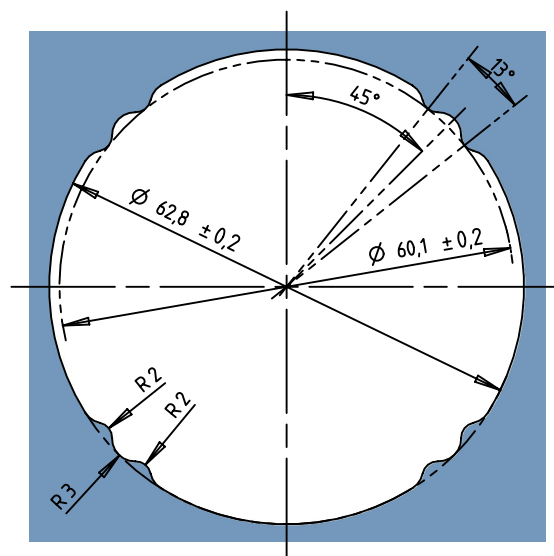
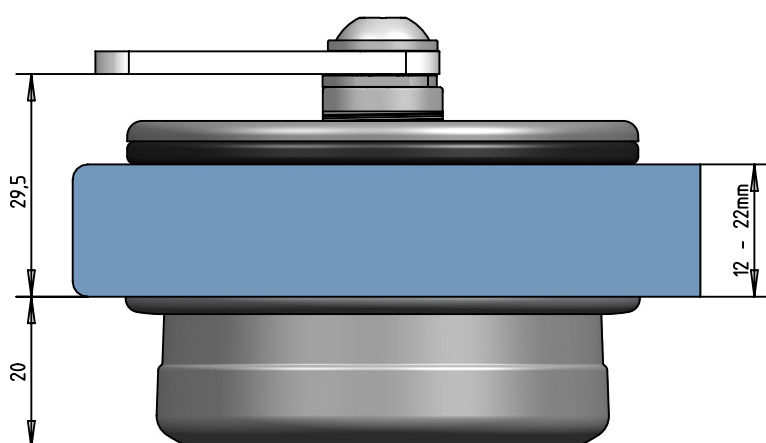


## Recessed mounting options

1. Recessed installation in steel doors using special perforations and an optional built in shell. (Specify when ordering)



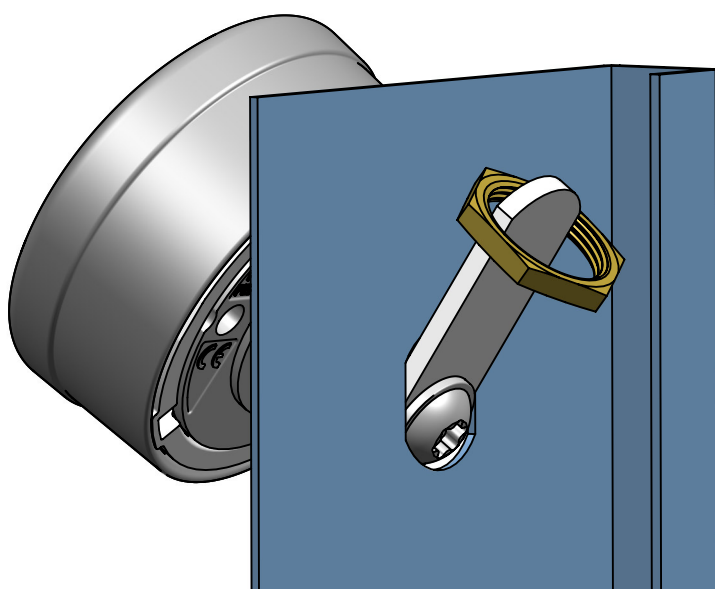
2. Recessed installation in wooden doors using special milling and optional built in shell (Specify when ordering)



## Assembly

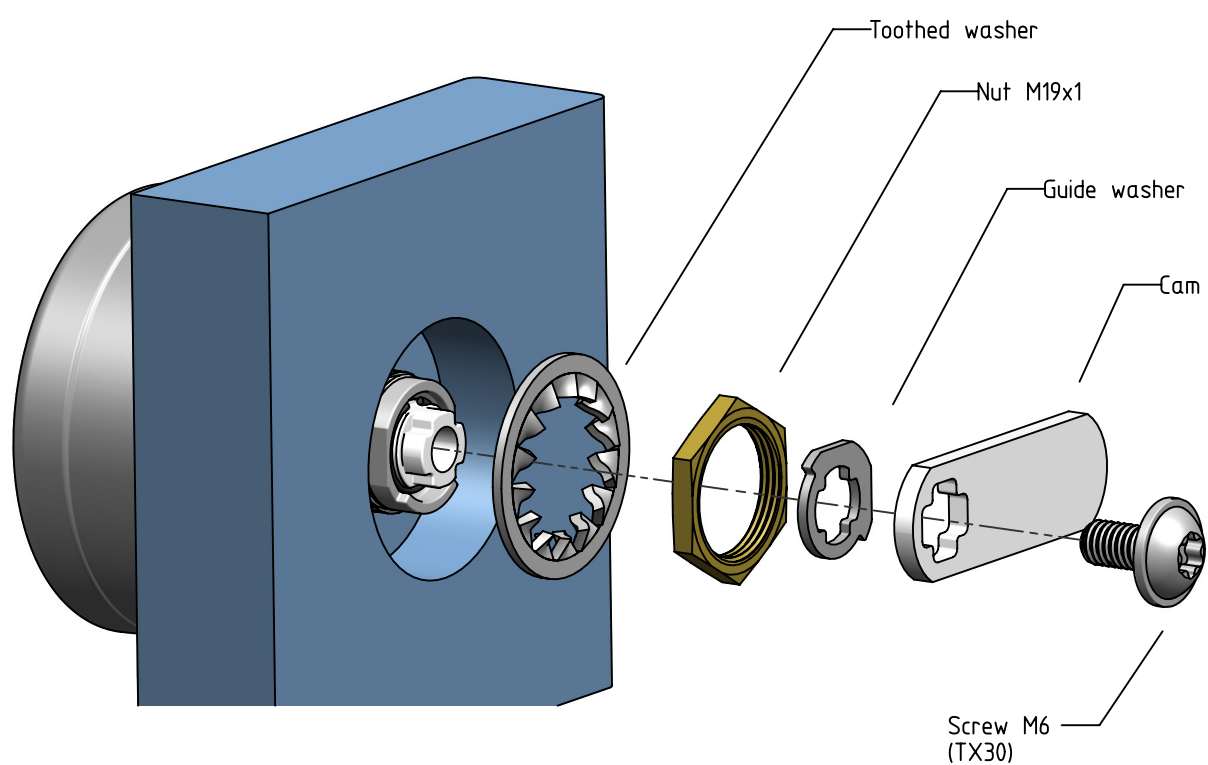
---

### 1. Standard assembly with pre-assembled cam with 16x19 hole pattern



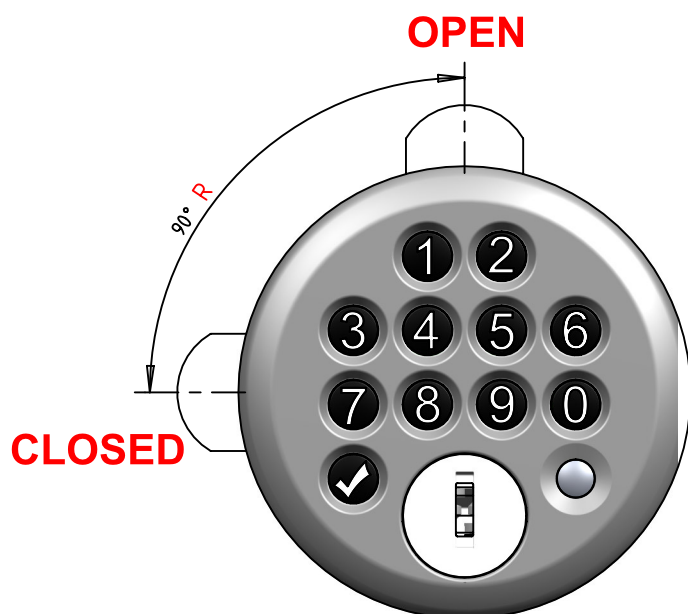
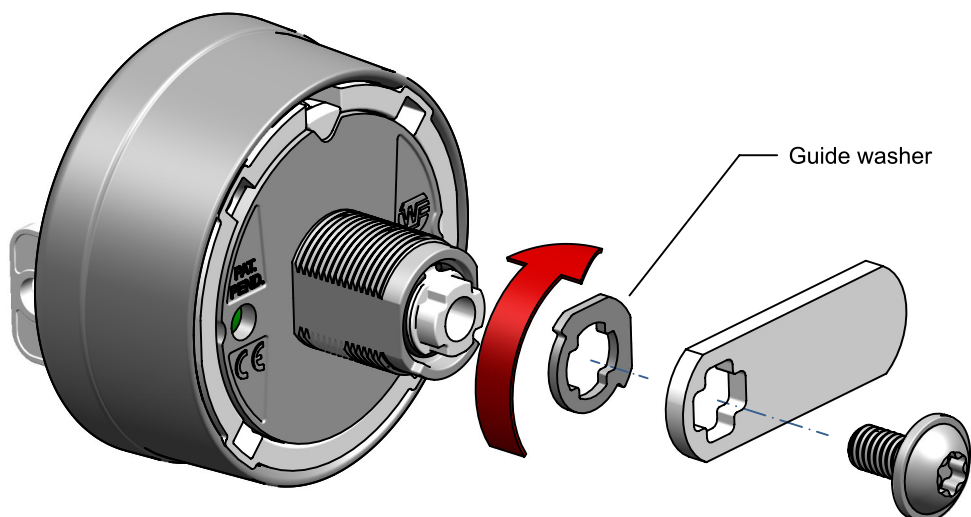
---

### 2. Assembly sequence for separately delivered cams

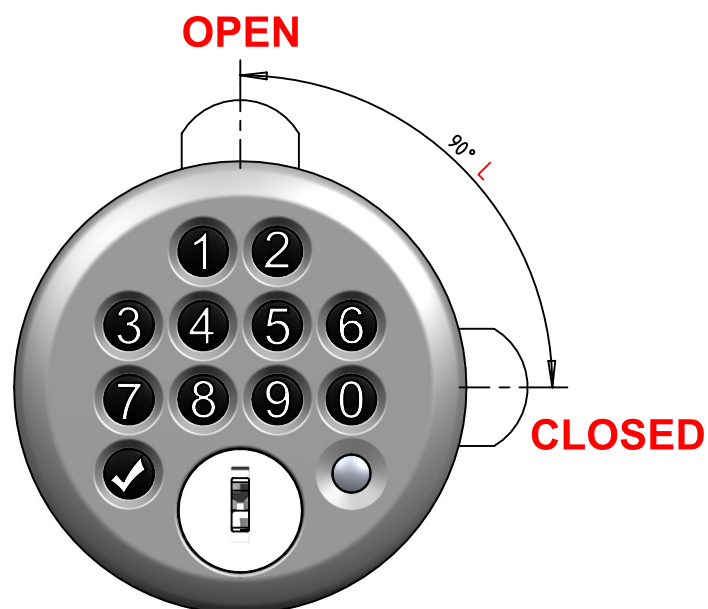


## Set the direction of rotation

(Only required for subsequent cam installation)



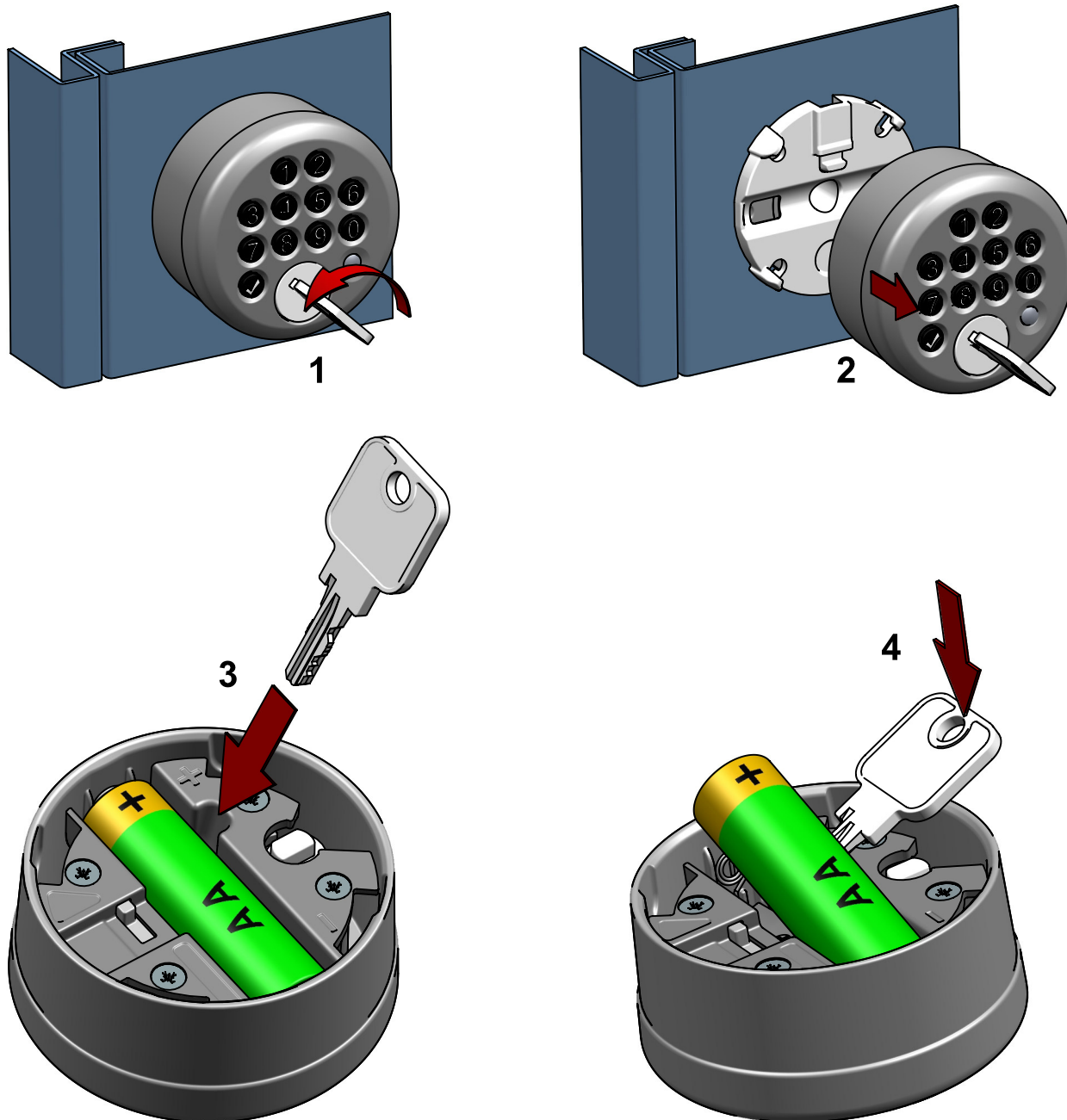
Direction of rotation "**R**"  
for doors hinged on the right



Direction of rotation "**L**"  
for doors hinged on the left

## Battery change

Battery type: 1,5V AA Alkaline  
(We recommend using brand name batteries)



### Caution::

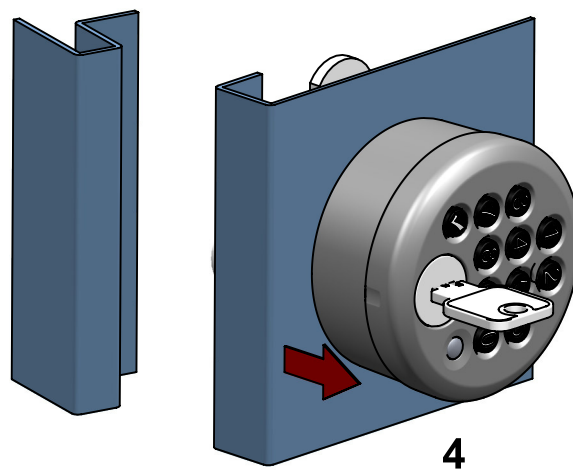
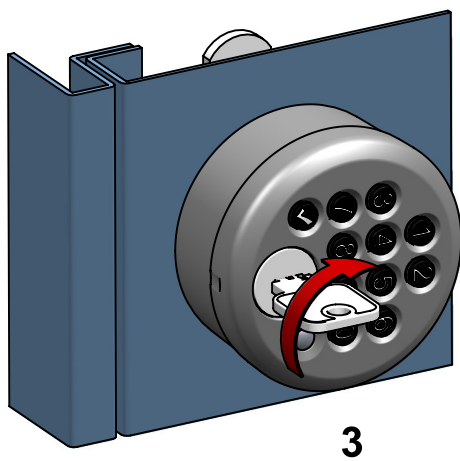
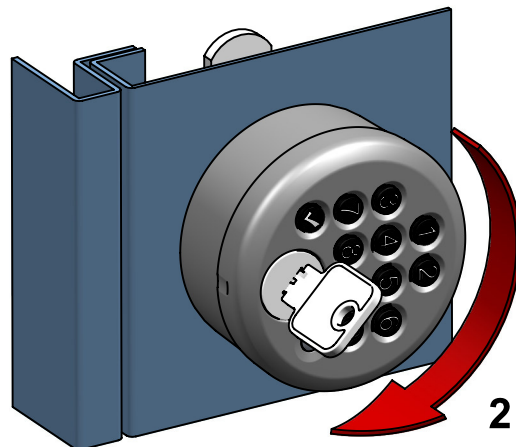
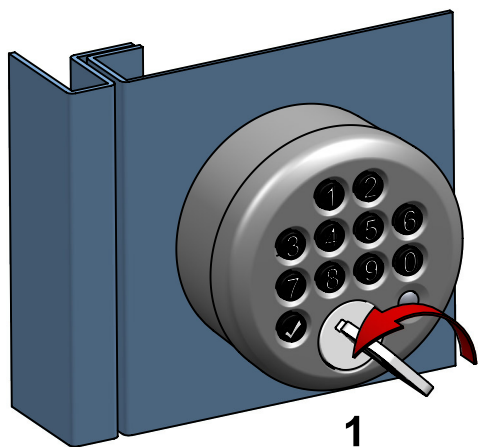
**Make sure that the polarity is correct when inserting the battery!**  
**Batteries inserted the wrong way round can damage or destroy the electronics.**

**Electronic devices and batteries must not be disposed of with household waste!**



## Emergency opening by service key

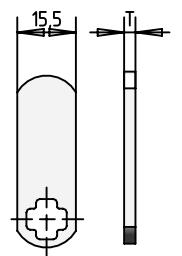
---





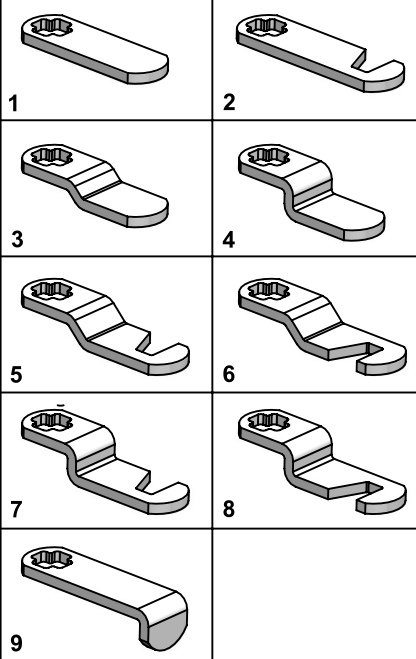
# Order matrix cam

1.Thickness "T"

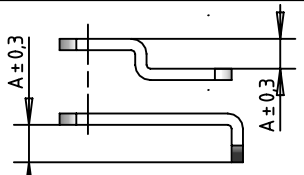


T = 2mm / 3mm

2. Shape

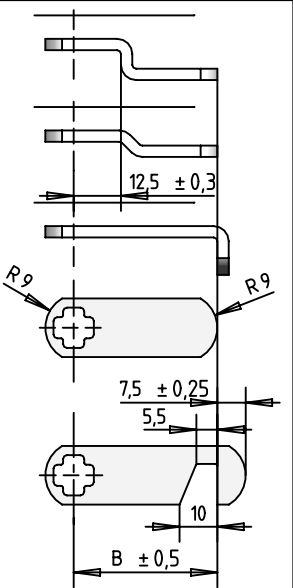


3. Height of crank "A"



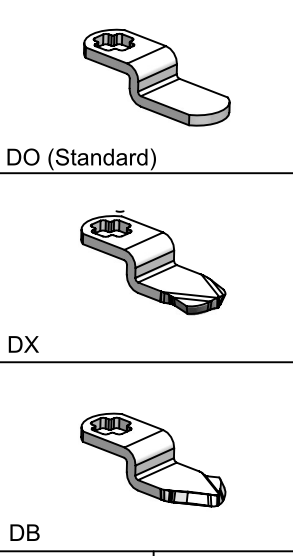
A	mm	für Form
00	0	-1-2-
03	1,2	-3-5-6-
04	1,6	-3-5-6-
05	2,0	-3-5-6-
06	2,4	-3-5-6-
07	2,8	-3-5-6-
08	3,2	-3-5-6-
10	4,0	-3-5-6-
12	4,8	-3-4-5-6-7-8-
14	5,6	-3-4-5-6-7-8-
16	6,4	-4-7-8-9-
20	7,9	-4-7-8-9-
21	8,3	-3-5-6-
25	9,9	-3-4-5-6-7-8-9-
28	11,1	-4-7-8-9-
32	12,7	-3-4-5-6-7-8-9-
34	13,5	-4-7-8-9-
38	15,0	-4-7-8-9-
40	15,9	-4-7-8-9-
44	17,5	-4-7-8-9-
48	19,1	-4-7-8-9-
50	19,9	-4-7-8-9-
64	25,4	-4-7-8-9-
72	28,6	-4-7-8-9-

4. Lenght "B"



-Lenght "B" made to order  
-Step range 1mm  
-Lenght before bending max.100

5. Cam end



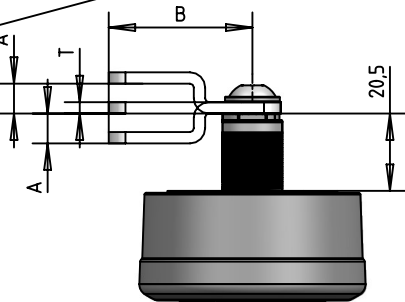
DO (Standard)

DX

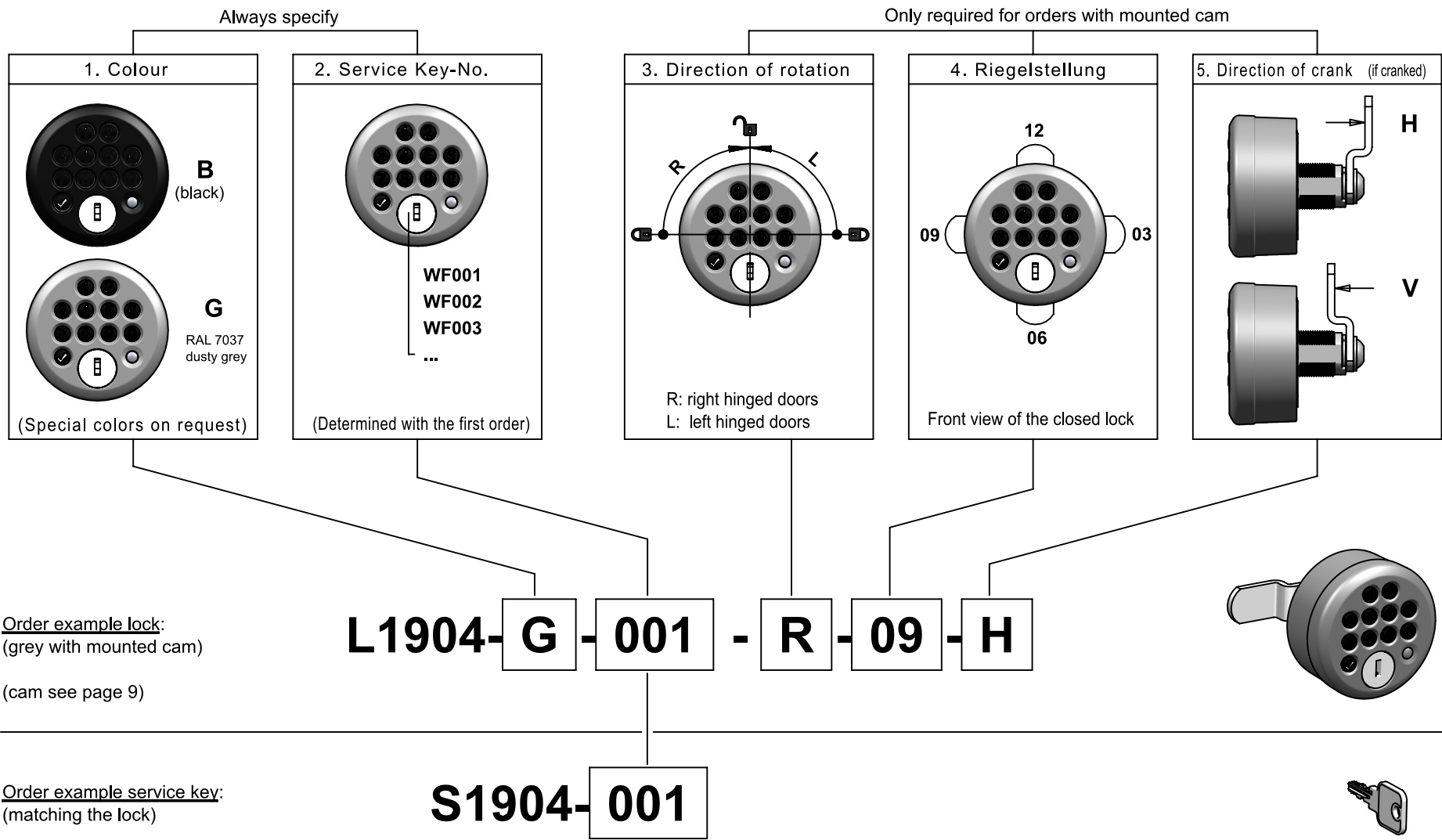
DB

Example Cam:

C1904-3-4-20-38-DO



# Order matrix Lock / Service key



## Operating and programming instructions

### General information:

Successful commands are acknowledged by a short 3-fold green flashing with beep.  
Incorrect commands are acknowledged by a short 3-fold red flashing with beep.

Incomplete commands or interruptions for longer than 5 seconds leads to reset to its initial state which is indicated by a red LED with a long beep.

In case of three times incorrect entered code, a penalty period of 10 seconds starts during which the lock does not accept any entries.  
During this time the LED lights up red. The penalty time starts again after every further wrong code entry

In the locked state of the public modes, the LED flashes red every 3 seconds as an occupied indicator.

Select the operating mode suitable for your application:

#### Privat:

The set user code remains stored until it is changed.  
(Cabinets dedicated to individuals for a longer period of time)

**Privat-Modus-A:** Single PIN entry to unlock. Locking takes place automatically after 4 seconds.

**Privat-Modus-B:** Single PIN entry to unlock. Single PIN entry to lock.

#### Public

The set user code is deleted each time it is unlocked.  
(Cabinets freely available to different people for a short period of time)

**Public-Modus-A:** Double PIN entry to lock. Single PIN entry to unlock.

**Public-Modus-B:** Single PIN entry + ✓ to lock. Single PIN entry to unlock.

For the public modes, a 3-digit number of minutes is programmed at the end, after which the lock automatically unlocks. (AUTO-OPEN-TIMER)  
Beispiele: (000 = no AUTO-OPEN) - (060 = AUTO-OPEN after 1 Hours) - (999 max. = AUTO-OPEN after 16 Hours and 39 min.)  
Timer-Tolerance: ±10%

Master-Code always has 6 digits.

User-Code always has 4 digits.

Auto-Open-Timer always has 3 digits.

Factory setting Master-code: \*\*\*\*\* (see delivery note)

Factory setting User-code: 6600

Factory setting operating mode: Privat-A

Replace the factory codes with your own as soon as possible!




(Customer settings such as master code and / or operating mode can also be preset at the factory on request)

Functions	Mode				Command input	Hints
	Privat A	Privat B	Public A	Public B		
<b>Master-Functions</b>						
Open lock	x	x	x	x	✓(Master-Code) 0	Deletes the user code in public mode
Close lock	x					Locks automatically after 4 seconds
Close lock		x			✓(Master-Code) 0	
Change Master-Code	x	x	x	x	✓(Master-Code) 1 (New Master-Code) (New Master-Code)	
Change User-Code	x	x			✓(Master-Code) 2 (New User-Code) (New User-Code)	
Set Public-Mode-A	x	x	x	x	✓(Master-Code) 3 1 (Auto-Open-Timer)	
Set Public-Mode-B	x	x	x	x	✓(Master-Code) 3 2 (Auto-Open-Timer)	
Set Privat-Mode-A		x	x	x	✓(Master-Code) 4 1	Sets the factory user code
Set Privat-Mode-B	x		x	x	✓(Master-Code) 4 2	Sets the factory user code
Beep on	x	x	x	x	✓(Master-Code) 5 1	
Beep off	x	x	x	x	✓(Master-Code) 5 2	
Reset to factory settings	x	x	x	x	Remove the battery and wait about a minute. Then reinsert the battery while keeping the ✓ - button pressed.	Restores the factory settings.
<b>User-Funktionen</b>						
Open lock	x	x	x	x	(User-Code)	Deletes the user code in public mode
Close lock	x					Locks automatically after 4 seconds
Close lock		x			(User-Code)	
Close lock			x		(User-Code) (User-Code)	
Close lock				x	(User-Code) ✓	
Change User-Code	x	x			✓ ✓(User-Code) (New User-Code) (New User-Code)	
Check battery status	x	x	x	x	✓ ✓ ✓	** = State of charge over 70% * = State of charge 30-70% • = State of charge below 30%
Battery warning	If the charge level of the battery is in the critical range of less than 10%, the LED flashes red four times after each command is entered.					




## Operating sticker (To be ordered separately)

DIN A7 (74x105mm) black / white foil, washable.



Privat-Mode-A

 Set / Change PIN	<p>Example</p> <ol style="list-style-type: none"> <li>1. ✓✓</li> <li>2. 6600 (Old PIN)</li> <li>3. 3941 (New PIN)</li> <li>4. 3941 (New PIN)</li> </ol>
	<ol style="list-style-type: none"> <li>1. Enter PIN 3941</li> <li>2. Turn lock to open the door</li> </ol>
	<p>Turn lock to close the door</p> <p>Lock locks automatically</p>



Privat-Mode-B

 Set / Change PIN	<p>Example</p> <ol style="list-style-type: none"> <li>1. ✓✓</li> <li>2. 6600 (Old PIN)</li> <li>3. 3941 (New PIN)</li> <li>4. 3941 (New PIN)</li> </ol>
	<ol style="list-style-type: none"> <li>1. Enter PIN 3941</li> <li>2. Turn lock to open the door</li> </ol>
	<ol style="list-style-type: none"> <li>1. Turn lock to close the door</li> <li>2. Enter PIN 3941</li> </ol>

Public-Mode-A

	<p>Example</p> <ol style="list-style-type: none"> <li>1. Turn lock to close the door</li> <li>2. Set PIN 3941</li> <li>3. Confirm PIN 3941</li> </ol>
	<ol style="list-style-type: none"> <li>1. Enter PIN 3941</li> <li>2. Turn lock to open the door</li> </ol>

Public-Mode-B

	<p>Example</p> <ol style="list-style-type: none"> <li>1. Turn lock to close the door</li> <li>2. Set PIN 3941</li> <li>3. Confirm PIN ✓</li> </ol>
	<ol style="list-style-type: none"> <li>1. Enter PIN 3941</li> <li>2. Turn lock to open the door</li> </ol>