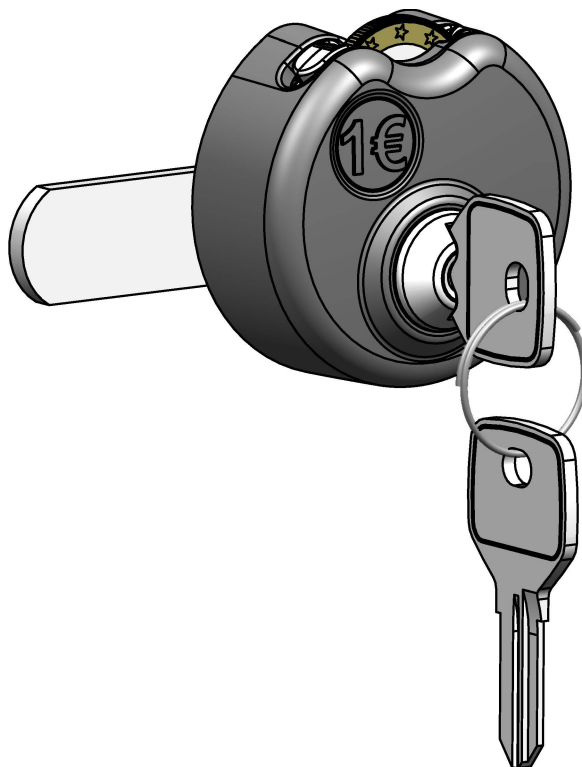


Technical Information

Coin Operated Lock 1606



Product description	2
Fitting dimensions	3
Mounting by Nut (Standard)	4
Mounting by Screws	5
Operating	6
Set/ Change direction of rotation	7
Change cylinder	8
Ordering matrix cam	9
Ordering matrix lock	10

Product description / Features

- Coin operated lock, usable as cam lock
- Easy to retrofit on most lockers with 16x19mm fixing holes
- Emergency opening by master key
- Compact and robust design
- Easy and self-explaining operation
- Cylinder with key bend protection and insertion guide
- User-friendly reversible key
- Direction of rotation R/L settable
- 1.000 keyed-different cylinders
- Cylinder core exchangeable
- Lock fixing by nut (A/F 22)
- Housing made of fibreglas-reinforced plastic
- Mechanism completely made of metal

Standard Product Contents

- Coin operated lock
- 2 pcs. user keys (1. key inserted, 2. key on ring)
- Cam (mounted)
- Fixing material

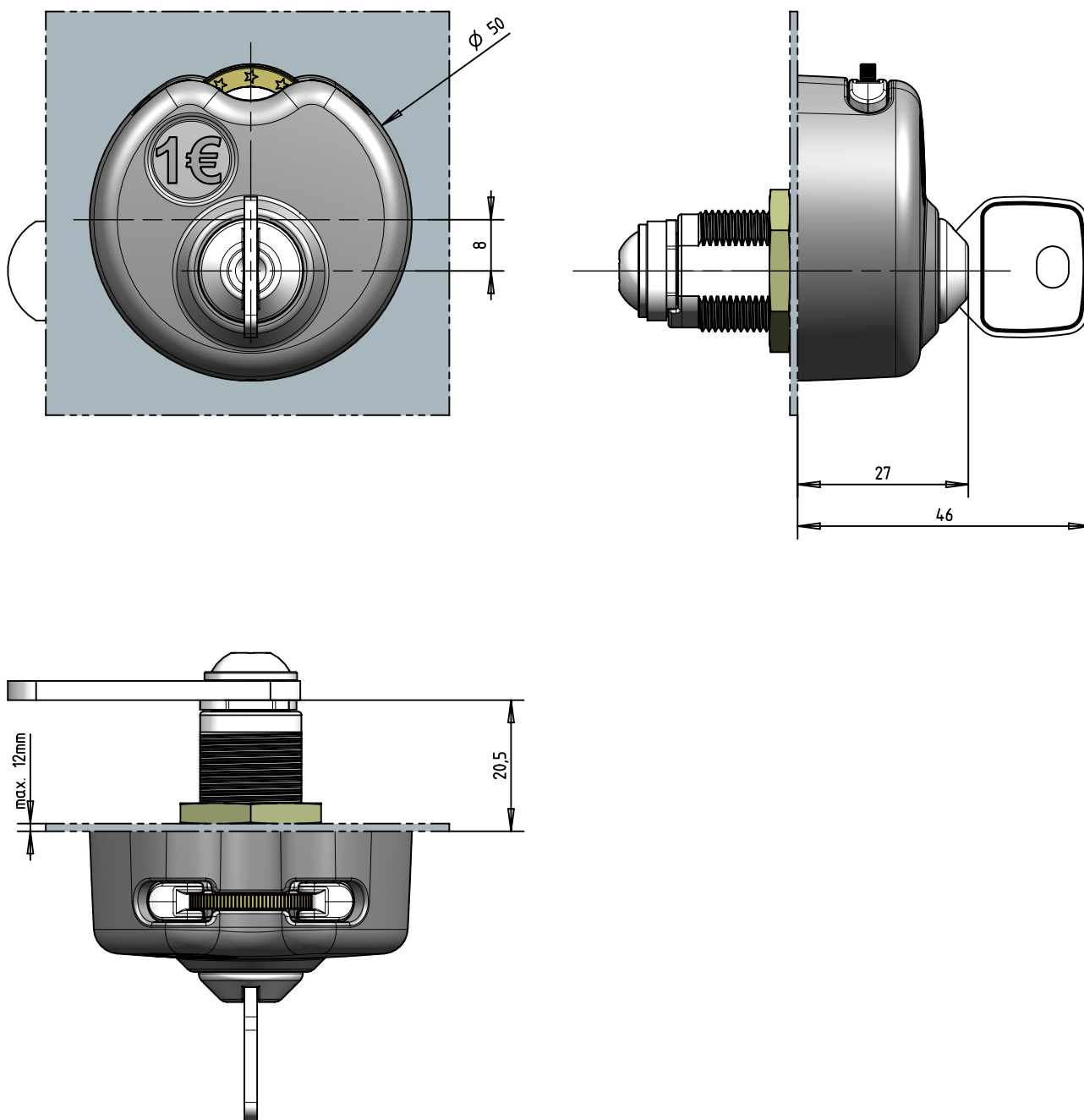
Optional Accessories (ordering separately)

- Master key
- Exchange cylinder core incl. two user keys
- Locking device (to lock and pull out the key without coin, e.g. for locker transport)

General intructions for use

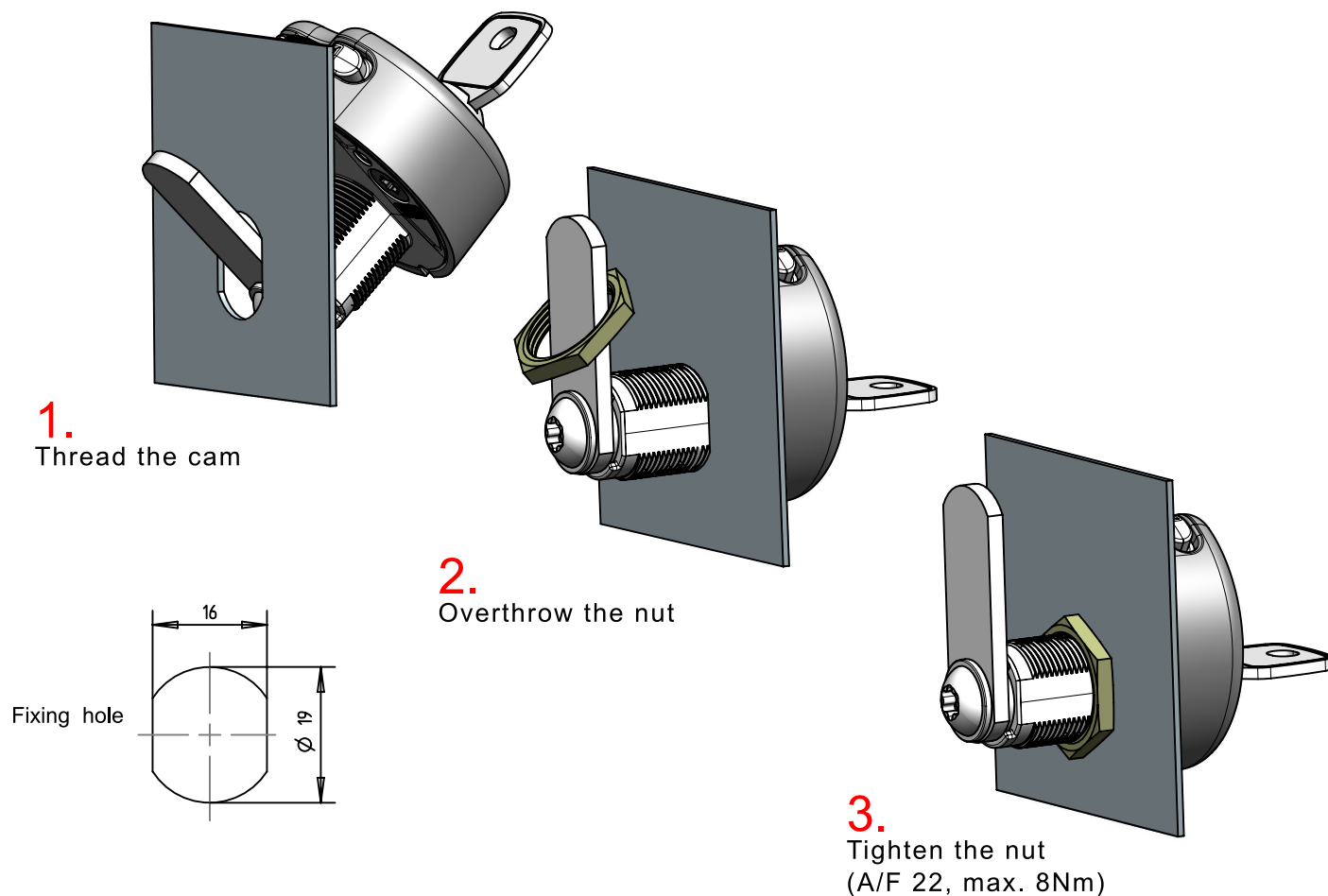
- Do not expose the lock to enviromental influences like water, moist and dust.
 - To use within temperature range from 0-50°C (32°F to 120°F)
 - For cleaning use damp cloth and common houshold detergent
 - Don't use aggressive or chemical products
 - When cleaning avoid that water or detergent enters the lock
-

Fitting dimensions

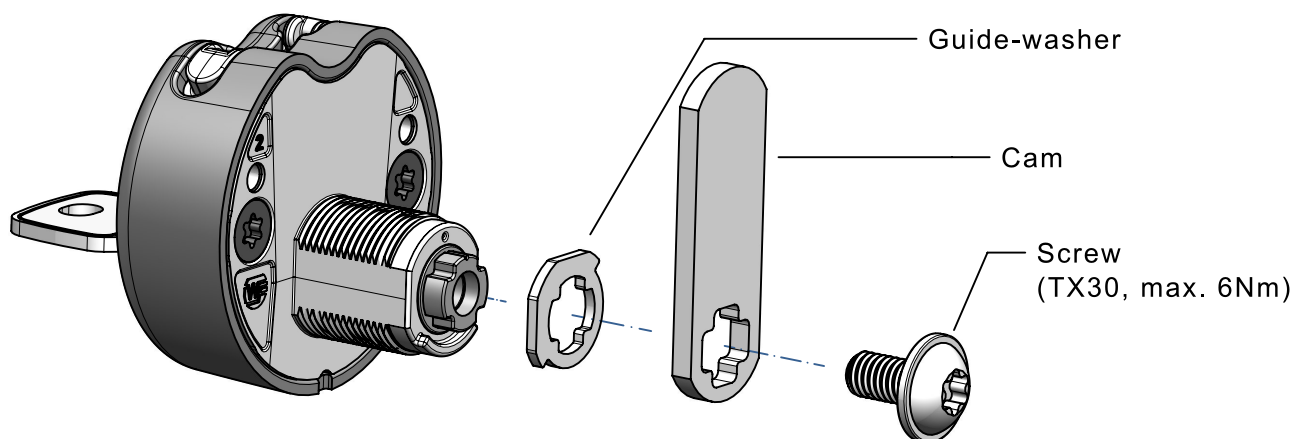


Mounting by Nut

Lock mounting with pre mounted cam (Standard)

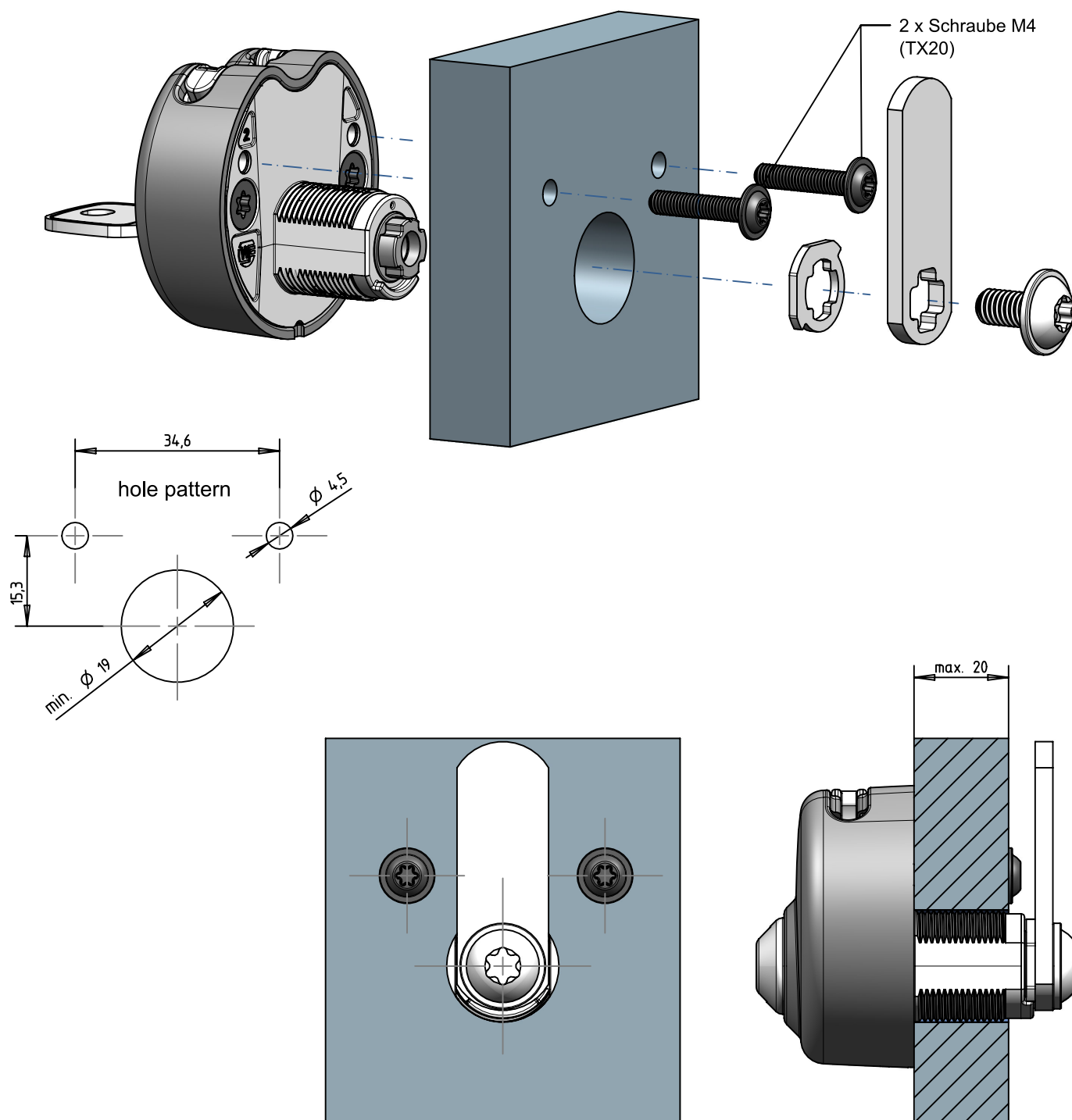


Cam mounting with using own cams



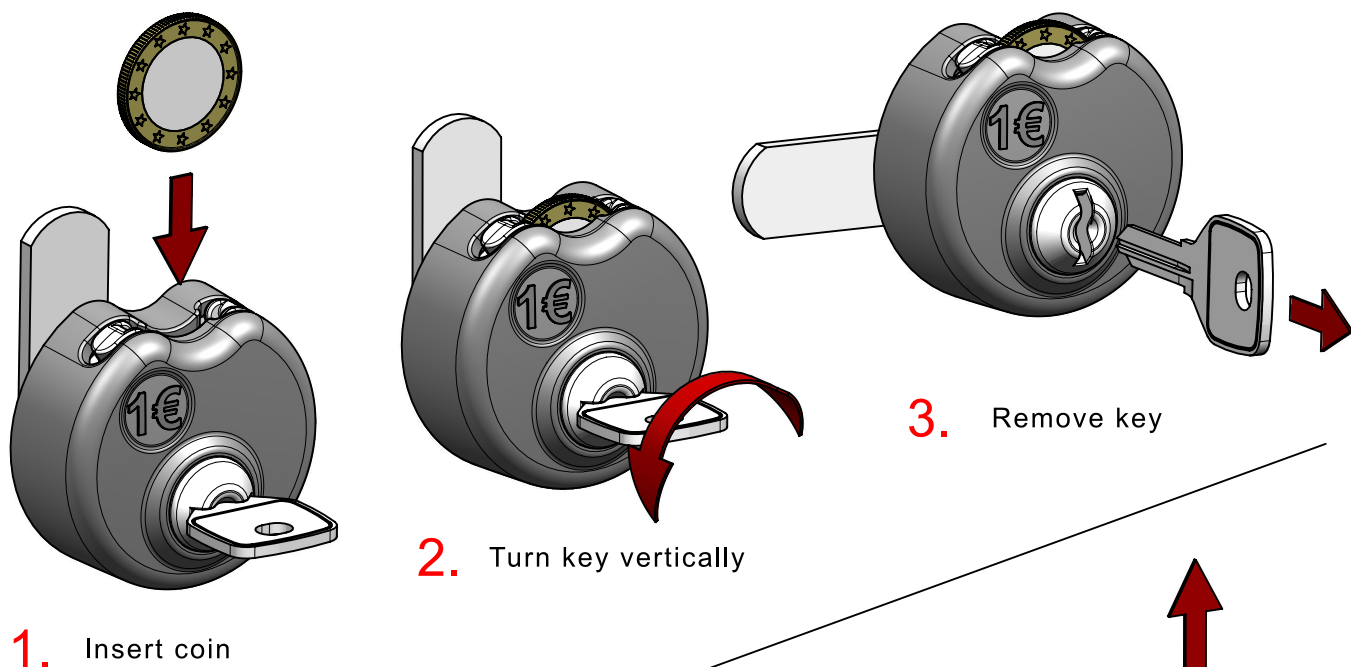
Mounting by screws

- Intended for doors without 16x19mm fixing hole and/or thicker than 12mm
- Suitable for plexiglass, laminate or wooden doors up to 20mm
- If this mounting is required, please indicate on the order (incl. door thickness)

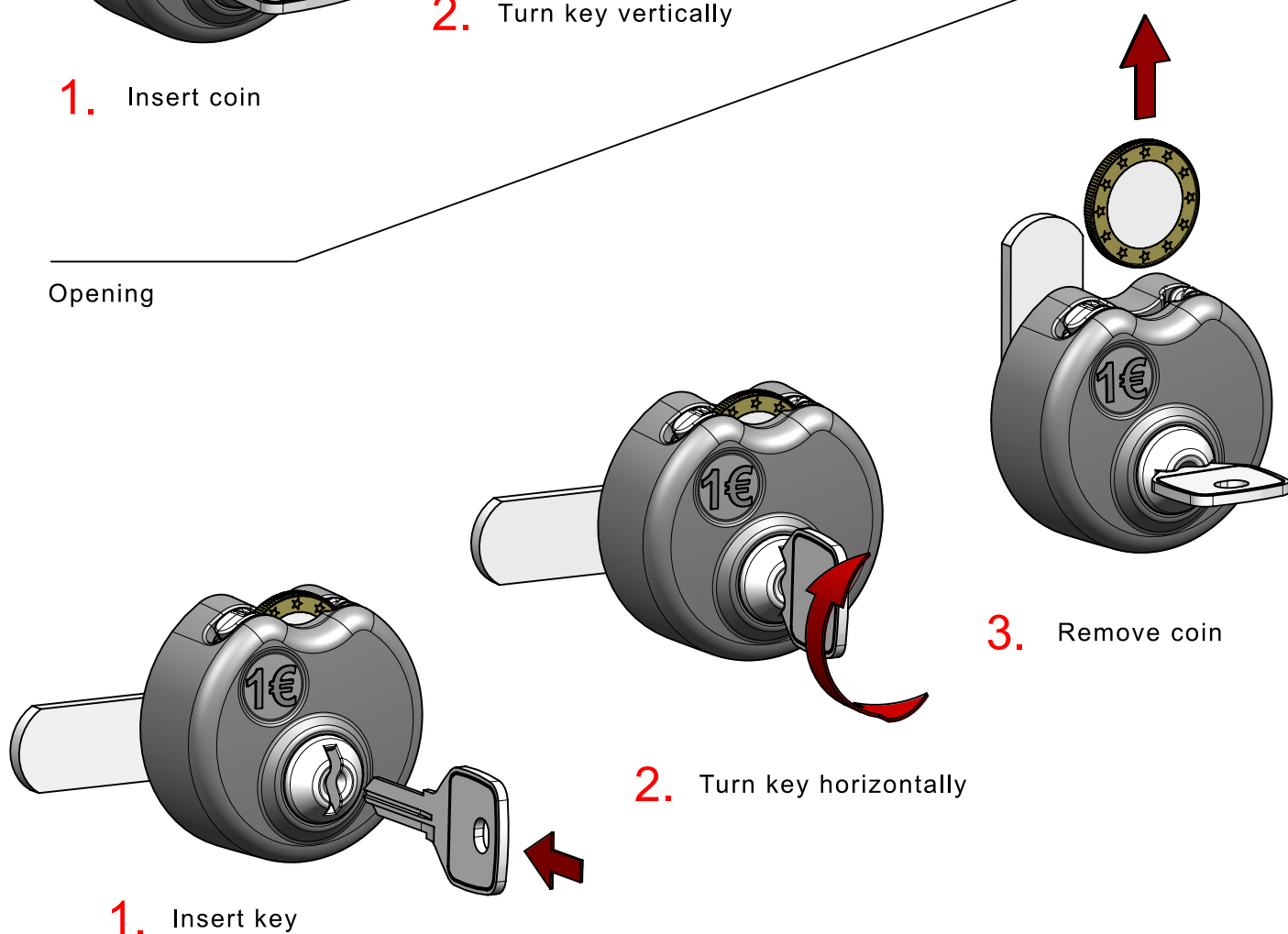


Operating

Closing

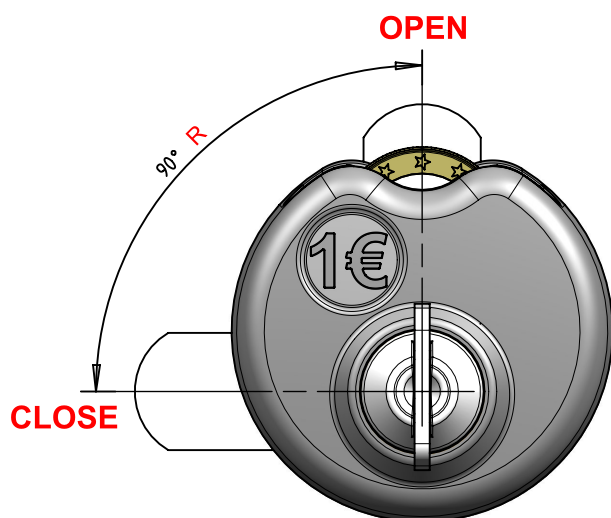
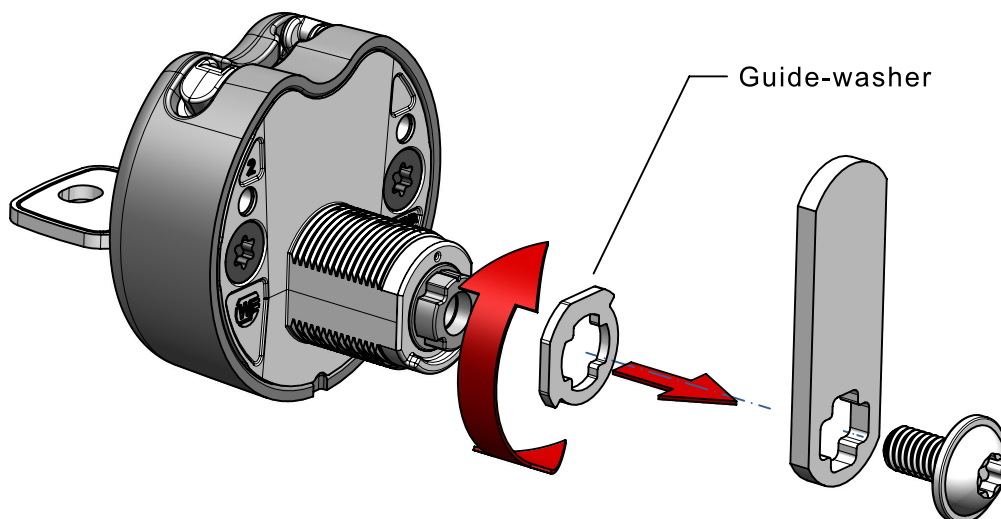


Opening

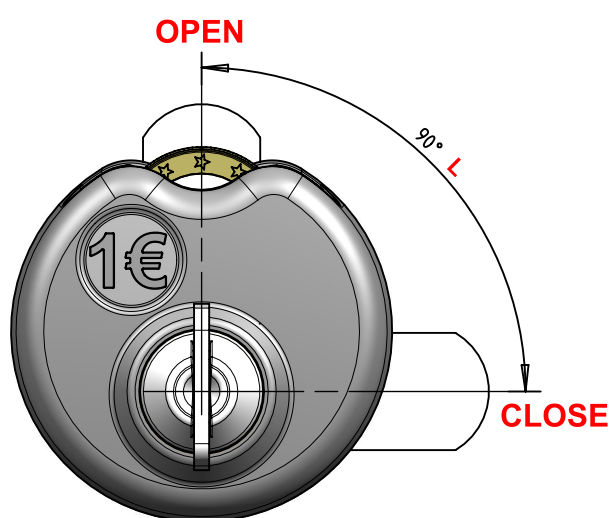


Set / Change direction of rotation

- Direction of rotation means the direction of the key to open the lock
- The direction of rotation is factory pre-set according order details
- The direction of rotation can be changed by turning the guide-washer



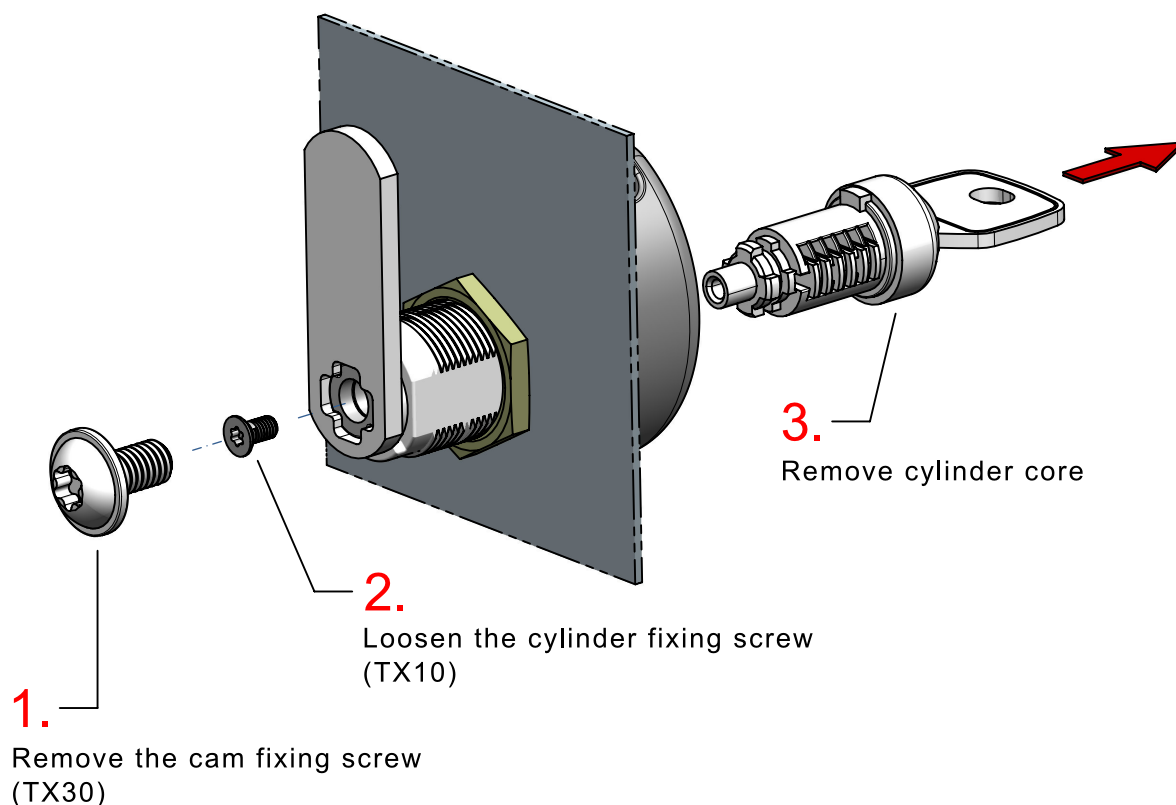
Rotation "**R**"
for right hinged doors



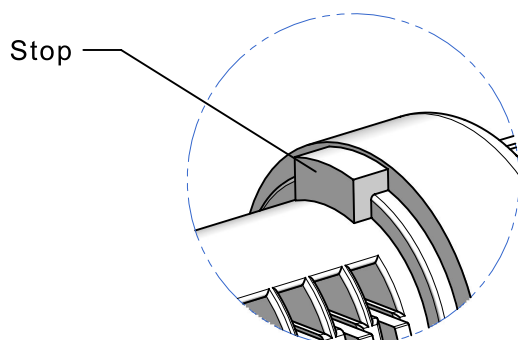
Rotation "**L**"
for left hinged doors

Change cylinder

- If required, the cylinder core can be changed (e.g. in case of lost key)
- The replacement is done with open lock, without coin and key in horizontally position

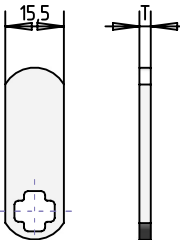


- Mounting of the new cylinder core takes place in reverse order
- When mounting make sure the stop of the core shows upwards



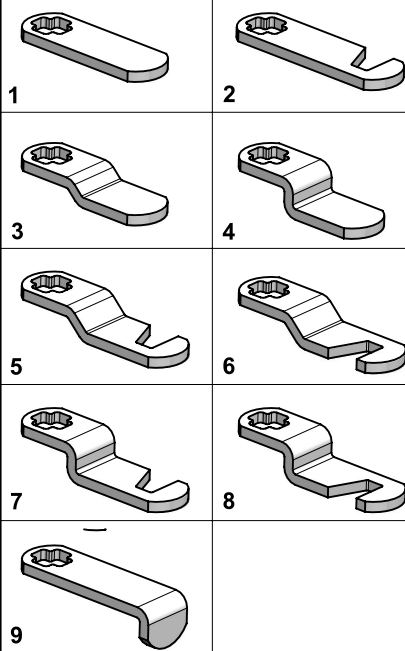
Ordering Matrix

1. Thickness "T"

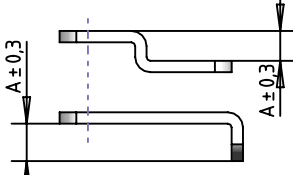


T = 2mm / 3mm

2. Shape

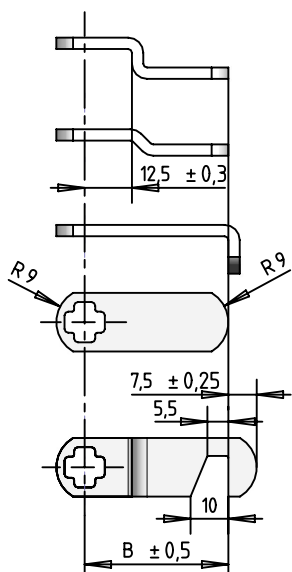


3. Height of crank "A"



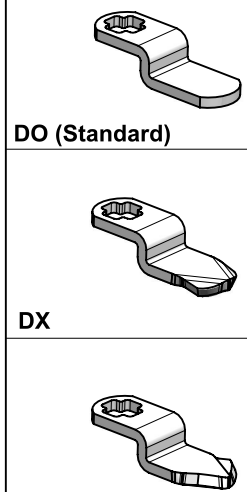
A	mm	for shape
00	0	-1-2-
03	1,2	-3-5-6-
04	1,6	-3-5-6-
05	2,0	-3-5-6-
06	2,4	-3-5-6-
07	2,8	-3-5-6-
08	3,2	-3-5-6-
10	4,0	-3-5-6-
12	4,8	-3-4-5-6-7-8-
14	5,6	-3-4-5-6-7-8-
16	6,4	-4-7-8-9-
20	7,9	-4-7-8-9-
21	8,3	-3-5-6-
25	9,9	-3-4-5-6-7-8-9-
28	11,1	-4-7-8-9-
32	12,7	-3-4-5-6-7-8-9-
34	13,5	-4-7-8-9-
38	15,0	-4-7-8-9-
40	15,9	-4-7-8-9-
44	17,5	-4-7-8-9-
48	19,1	-4-7-8-9-
50	19,9	-4-7-8-9-
64	25,4	-4-7-8-9-
72	28,6	-4-7-8-9-

4. Length "B"

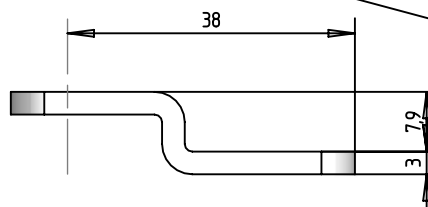


-Length in 1mm steps
(stretched length max. 100mm)

5. End of cam

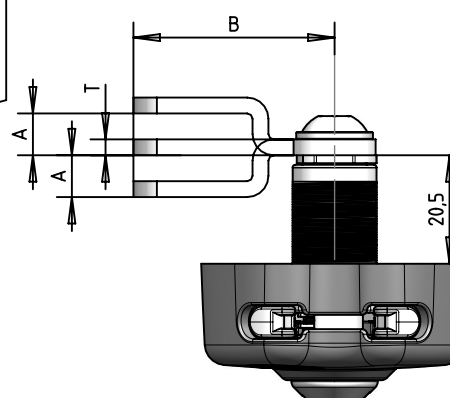


DO (Standard)
DX
DB





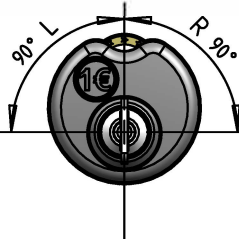
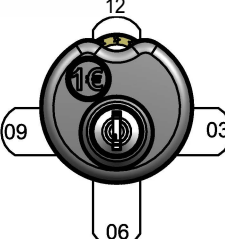
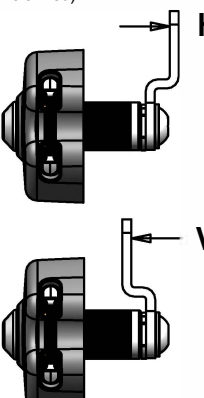


order example cam:

C1606-3-4-20-38-DO

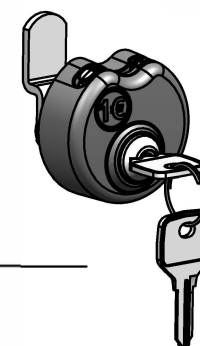


Ordering Matrix Lock

Always needed specification			Only needed with premounting of cam																						
1. Colour  B (black)  G (dusty grey) (RAL 7037)	2. Coin  <table border="1"> <tr><td>1 Euro</td><td>EU</td></tr> <tr><td>100 Hungarian Forint</td><td>FT</td></tr> <tr><td>1 Swiss Franc</td><td>SF</td></tr> <tr><td>5 Polish Zloty</td><td>ZL</td></tr> <tr><td>1 British Pound</td><td>BP</td></tr> <tr><td>10 Czech Koruna</td><td>KC</td></tr> <tr><td>1 Bulgarian Lev</td><td>LV</td></tr> </table>	1 Euro	EU	100 Hungarian Forint	FT	1 Swiss Franc	SF	5 Polish Zloty	ZL	1 British Pound	BP	10 Czech Koruna	KC	1 Bulgarian Lev	LV	3. Master lock system  <table border="1"> <tr><td>A</td></tr> <tr><td>B</td></tr> <tr><td>C</td></tr> <tr><td>D</td></tr> <tr><td> </td></tr> <tr><td> </td></tr> </table>	A	B	C	D			4. Direction of rotation (Direction of key to open the lock) R: for right hinged doors L: for left hinged doors 	4. Cam position (View from front when locked) 	5. Crank direction (If cranked) 
1 Euro	EU																								
100 Hungarian Forint	FT																								
1 Swiss Franc	SF																								
5 Polish Zloty	ZL																								
1 British Pound	BP																								
10 Czech Koruna	KC																								
1 Bulgarian Lev	LV																								
A																									
B																									
C																									
D																									

Order example for a coin lock in black,
for 1 Euro coins,
master lock system A,
for right hinged doors,
with cranked cam:

L1606 -[fil - - -[fil -@!] -[ill



Order example for a master key,
matching the lock above:

51606-