

ABET LAMINATI

Unlimited selection

LOCKER COLLECTION



DOOR DECORS 10mm Thickness (3660 x 1610mm)



410 • Ice White • Sei



813 • Beige Manhattan • Sei



486 • Blue Lake • Sei



460 • Green Grass • Sei



839 • Green Water • Sei



860 • Yellow Piper • Sei



431 • Red • Sei



427 • Fuchsia • Sei



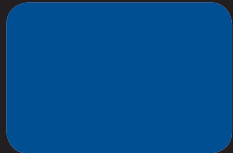
425 • Lilac Erica • Sei



801 • Blue Tempest • Sei



499 • California Blue • Sei



859 • Blue Pottery • Sei



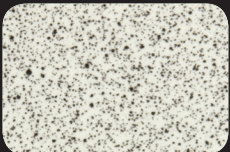
477 • Grey • Sei



870 • Grey Cloud • Sei



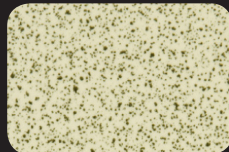
879 • Graphite Grey • Sei



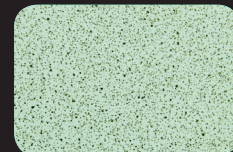
236 • Spring White Speckle
• Sei



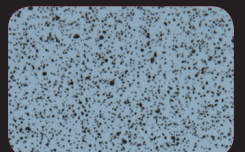
9947 • Light Grey Speckle
• Sei



9434 • Beige Manhattan
Speckle • Sei



9946 • Caribbean Green
Speckle • Sei



9949 • Blue Tempest
Speckle • Sei



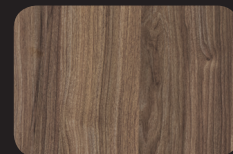
1677 • Light Maple
• Sei



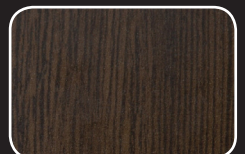
1666 • American Beech
• Sei



1661 • Mountain Oak • Sei



616 • Walnut • Sei

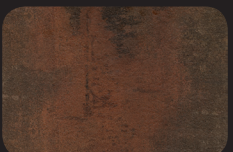


312 • Wenge • Sei

DOOR DECORS 10mm Thickness (¹ = 4200 x 1300mm / ² = 3050 x 1300mm)



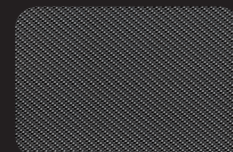
2810 • Cement • Rust ¹



2811 • Mongolia • Rust ¹



568 • Silver Minimi •
Mandarin * ²



571 • Black Carbon •
Sei-Due ²



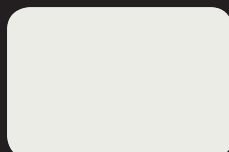
421 • Black •
Grainwood ²

CARCASS DECORS 6mm Thickness (3660 x 1610mm)

Patterns shown are reproduced as accurately as possible within the constraints of the printing process.

Key: Ref code • Colour • Finish

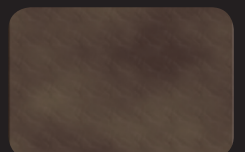
* 568 • Silver Minimi • Mandarin also available in 3660 x 1610mm sheet size



130 • White • Morbida



475 • Pearl Grey •
Morbida



888 • Brown • Morbida

SAMPLES

Should you require samples of any of these decors, please contact the **Abet Laminati's Samples Hotline** on **020 7473 6915** or email: sales@abet.ltd.uk

LOCKER COLLECTION

COMPACT GRADE LAMINATE – 10mm and 6mm

Abet Laminati's High Pressure Compact Grade Laminate is a hardwearing, durable and very attractive solution for locker applications with excellent resistance to impact, scratches and abrasion.

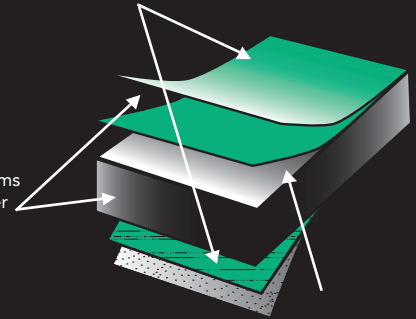
- It is ideal for use in areas of high moisture and humidity such as leisure centres and swimming pool changing rooms as its solid core construction means there is no risk of peeling, cracking or delamination.
- Recommended for use on lockers in high traffic areas such as in schools, hospitals, airports and other areas subject to heavy use and wear.
- Its non-porous fabrication and edging also make it ideally suited for use in sterile and hygienic environments including hospitals, laboratories and food preparation areas.
- Classified as Euroclass C,s2-d0 according to EN 13501-1

SHEET SIZES

- 10mm – 3660 x 1610mm, 4200 x 1300mm and 3050 x 1300mm
Generally used for doors
- 6mm – 3660 x 1610mm
Generally used for carcasses

Overlay impregnated with melamine resin to provide a tough, durable and resistant surface

Decor paper impregnated with melamine resin forms the decorative layer and provides surface durability



Black core made up from layers of kraft paper impregnated with phenolic thermosetting resins to give inner strength and durability

GENERAL INFORMATION

The Locker Collection is manufactured in the most modern and largest HPL factory in Europe and conforms to all the requirements of BS EN438:2. The sheets offer a hardwearing, impact resistant and very attractive decorative surface.

The range is available in a selection of plain colours with complementary speckle and patterned effects and woodgrain finishes. The HPL has been specially selected for applications in areas of heavy usage or vandalism.

The compact grade HPL is a durable, versatile and economic product resistant to vandalism, impact and water. Its decorative surface with an easy-to-clean texture is enhanced by the solid black core offered as a standard feature of this collection. Its 10mm thickness ensures that the HPL can be used in conjunction with the majority of available fittings and fixing systems.

CLEANING AND MAINTENANCE

The Locker Collection will give years of excellent service provided a few simple rules are followed:

Light dirt or stains can be removed easily with warm water and mild detergent. Stubborn marks should be removed using a non-abrasive cream cleaner or mild domestic bleach. Harsh abrasives or scouring powders should be avoided. Grease marks can be removed with a proprietary paint and graffiti remover. Hair dyes, bleaches, caustic alkalis and strong mineral acids should be wiped off within a short period.

We strongly recommend that all Abet Laminati HPL products are stored, conditioned and fabricated in accordance with our own and BLFA guidelines.

More detailed technical information brochures are available from our office and/or your local distributor.



COLOUR COMPARISON, LIGHT REFLECTIVE VALUES AND SHEET SIZES

Decors		LRV	Nearest NCS	Exact NCS	Finish	Thickness	3660 x 1610	3050 x 1300	4200 x 1300
130	White	81	--	--	Morbida	6mm	•		
236	Spring White Speckle	60	--	--	Sei	10mm	•		
312	Wengè	8	--	--	Sei	10mm	•		
410	Ice White	79	S0502-G	0702-G06Y	Sei	10mm	•		
421	Black	4	S8502-B	8402-R85B	Grainwood	10mm		•	
425	Lilac Erica	48	S1030-R50B	1431-R52B	Sei	10mm	•		
427	Fuchsia	18	S2060-R20B	1959-R24B	Sei	10mm	•		
431	Red	15	S2070-Y90R	2364-Y95R	Sei	10mm	•		
460	Green Grass	41	S1060-G30Y	1359-G34Y	Sei	10mm	•		
475	Pearl Grey	45	S2502-B	2602-B01G	Morbida	6mm	•		
477	Grey	36	S3005-R80B	2906-R95B	Sei	10mm	•		
486	Blue Lake	42	--	--	Sei	10mm	•		
499	California Blue	29	S2050-B	1754-R98B	Sei	10mm	•		
568	Silver Minimi	38	--	--	Mandarin	10mm	•	•	
571	Black Carbon	--	--	--	Sei-Due	10mm		•	
616	Walnut	19	--	--	Sei	10mm	•		
801	Blue Tempest	34	S2030-R90B	2427-R89B	Sei	10mm	•		
813	Beige Manhattan	66	S1010-Y30R	1108-Y30R	Sei	10mm	•		
839	Green Water	30	S2050-G	2052-G06Y	Sei	10mm	•		
859	Blue Pottery	8	S4050-R80B	4544-R84B	Sei	10mm	•		
860	Yellow Piper	46	S1070-Y10R	1171-Y14R	Sei	10mm	•		
870	Grey Cloud	26	S4005-R80B	4201-R85B	Sei	10mm	•		
879	Graphite Grey	9	S7502-B	7302-R67B	Sei	10mm	•		
888	Brown	--	--	--	Morbida	6mm	•		
1661	Mountain Oak	28	--	--	Sei	10mm	•		
1666	American Beech	39	--	--	Sei	10mm	•		
1677	Light Maple	62	--	--	Sei	10mm	•		
2810	Cement	--	--	--	Rust	10mm			•
2811	Mongolia	--	--	--	Rust	10mm			•
9434	Beige Manhattan Speckle	43	--	--	Sei	10mm	•		
9946	Caribbean Green Speckle	50	--	--	Sei	10mm	•		
9947	Light Grey Speckle	43	--	--	Sei	10mm	•		
9949	Blue Tempest Speckle	28	--	--	Sei	10mm	•		



ABET LAMINATI |||||

Unlimited selection

70 Roding Road, London Industrial Park, London E6 6LS
 Telephone: +44 (0)20 7473 6910 Fax: +44 (0)20 7476 6935
 Email: sales@abet.ltd.uk sales@abet.ie
 www.abetuk.com www.abet.ie